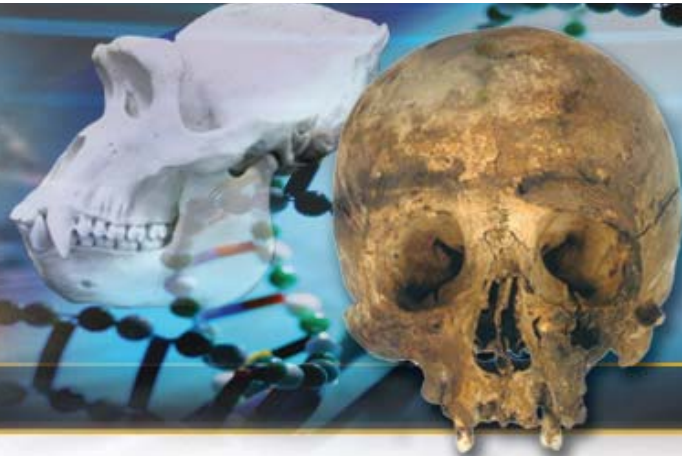




BRITISH ASSOCIATION FOR  
BIOLOGICAL ANTHROPOLOGY  
AND OSTEOARCHAEOLOGY



## The 10th Annual Conference of the British Association for Biological Anthropology and Osteoarchaeology



Oxford Archaeology and Oxford University  
St Anne's College, Oxford  
September 2008



### PRELIMINARY PROGRAMME

#### Friday 5th September

11.30-13.10 Registration

13.10 Welcome

#### Session 1. Ten Years Down the Line: Osteoarchaeology at the Molecular Level

Chair: TBA

13.15 Diet and Social Variation in Early Medieval Populations  
SCHUTKOWSKI, Holger. (University of Bradford)

13.35 Teaching Old Bones New Tricks: Molecular Analysis of Archaeological  
*Mycobacterium leprae* DNA  
WATSON, Claire. (London School of Hygiene)

13.55 Diet and Mobility in the Dutch Neolithic: a Multiple Isotopic Approach  
MILLARD, Andrew. (Durham University)

14.15 Scurvy, the Scourge of Guinea Pigs and Man  
KOON, Hannah. (University of York)

14.35-15.35 *Coffee, session related posters and commercial osteology stands*

15.35 Carbon and Nitrogen Stable Isotope Ratios Reveal Diachronic Dietary  
Differences on the Islands of Formentera and Ibiza, Spain  
MARQUEZ-GRANT, Nicholas. (Oxford Archaeology)

15.55 Maggots, Microbes, and Molecules: The Microbiology of Death  
WHITE, Lorraine. (University of Sheffield)

Only presenting authors are given here.

\* = Entrant for student prize

Further information about the conference can be found at:

<http://www.babao.org.uk/index/babao-conference-2008>

- 16.15 Ancient Dental Calculus and What's Inside It.  
HARDY, Karen. (University of York)
- 16.35 An Isotopic Study of Diet in Medieval Spain  
MUNDEE, Michelle (Durham University)\*
- 17.30 10th Anniversary Celebration Keynote Lecture: 'Flesh and Bones: a Decade of Viewing the People of the Past'  
Professor Don Brothwell  
(this lecture will also be open to the public as a ticketed event).
- 18.30 Wine reception  
19.30 Dinner at St Anne's

## **Saturday 6th September**

### **Session 2. The Modified Body: Biocultural Approaches to the Study of Human Skeletal Modification (PART I)**

**Chair:** TBA

- 9.15 'The particulars....will excite the greatest disgust and indignation': Dissection and Autopsy at the London Hospital Medical School.  
POWERS, Natasha. (MoLAS)
- 9.35 Relationship Between Chest Shape, Orientation of Muscle Insertions and Humeral Cross-sectional Geometric Properties.  
NIINIMÄKI, Sirpa. (University of Oulu, Finland)\*
- 9.55 Ten Years of Activity? Movement and Direction Since 1998  
HENDERSON, Charlotte. (Durham University)
- 10.15 Dental Modification by Non-Masticatory Habitual Activity  
LOVELL, Nancy. (University of Alberta, Canada)
- 10.35-11.35 *Coffee, session related posters and commercial osteology stands*
- 11.35 Materialising Mesolithic Identities Through Mortuary Practice  
GRAY JONES, Amy. (University of Manchester)\*
- 11.55 Violence and Conflict in Neolithic Europe: Cranial Trauma Reconsidered  
FIBIGER, Linda. (University of Oxford)\*
- 12.15 Skeletal Preservation Among Florida's Archaic Mortuary Ponds  
WENTZ, Rachel. (Florida Public Archaeology Network)
- 12.35-13.35 *Lunch*

Only presenting authors are given here.

\* = Entrant for student prize

Further information about the conference can be found at:

<http://www.babao.org.uk/index/babao-conference-2008>

- 13.35 Gender in a 19th and 20th Century Portugal. A Palaeopathological Perspective.  
ALVES-CARDOSO, Francisca. (Centre for Research in Anthropology, Portugal)
- 13.55 Cultural Cranial Modification in the Eastern Mediterranean and the Near East  
LORENTZ, Kirsi. (University of Newcastle)
- 14.15 Human Remains from the Bredon Hillfort 'Massacre Layer'  
WESTERN, Gaynor. (Ossa Freelance)
- 14.35 Modifications in Dimensions and Biomechanical Properties of Lumbar  
Vertebra: Temporal Trends from Medieval to Modern Day  
JUNNO, Juho-Antti. (University of Oulu, Finland)
- 14.55-15.25 *Coffee, open session posters and commercial osteology stands*

### **Session 3. Open Session A**

**Chair:** TBA

- 15.30 Tuberculosis in the Non-Adults from Romano-British Poundbury Camp.  
LEWIS, Mary. (University of Reading)
- 15.50 Finger Length Ratios (2D:4D) and Social Group Rank in Female Rhesus  
Macaques (*Macaca Mulatta*) from Cayo Santiago, Puerto Rico: Implications For  
the Evolution of Human Social Behaviour.  
NELSON, Emma. (University of Liverpool)\*
- 16.10 Mass Graves in a Medieval Cemetery: Sketetal Remains from the Barbican Site,  
York.  
CHAMBERLAIN, Andrew. (University of Sheffield)
- 16.30 'The Good, the Bad and the Ugly': a Ten Year Retrospection  
COX, Margaret.(Cranfield University)
- 19.00 Conference Dinner at Wolfson College (plated service)  
21.00 Annual pub quiz at Wolfson College bar

### **Sunday 7th September**

#### **Session 4. Open Session B**

**Chair:** TBA

- 9.15 Social Status, Health Status and Life Expectancy in late Anglo-Saxon England.  
BUCKBERRY, Jo.(University of Bradford)
- 9.45 Residual Rickets Deformities: Missing Information on Past Societies.  
BRICKLEY, Megan. (University of Birmingham)

Only presenting authors are given here.

\* = Entrant for student prize

Further information about the conference can be found at:

<http://www.babao.org.uk/index/babao-conference-2008>

- 10.15 A Bioarchaeological Analysis of Human Skeletal Remains from Early Central Sudan.  
JAKOB, Betina. (Durham University)
- 10.45 Osteological report on the Neolithic Population of Hodmezovasarhely-Gorzsa and some neighbouring communities, Southern Hungary.  
MASSON, Muriel. (University of Edinburgh)\*
- 11.15-11.45 *Coffee, open session posters and commercial osteology stands*
- 11.45. Living and Dying in Ancient Rome: Results of a Preliminary Analysis of Skeletal Remains from the Collatina Cemetery  
GOWLAND, Rebecca. (Durham University)
- 12.05 Ethics and Human Remains: Curators acting in *loco parentis*?  
STURE, Judi. (Univeristy of Bradford)
- 12.25 Using LC-IRMS to Trace the Flow of Dietary Carbon in Amino Acids from Breast Milk to Infant Tissue.  
FULLER, Benjamin. (Max Planck Institute for Evolutionary Anthropology)
- 12.45 The Lankhills Cemetery Population: New Evidence  
CLOUGH, Sharon. (Oxford Archaeology)
- 13.05 Understanding the Cause of Death. Micro-morphological Analysis of Vital and Post-mortem lesions in Human Skeletal Remains.  
GUERRA, Giovanni. (Azienda Sanitaria Cosenza, Italy)
- 13.30 Closing announcements and award of student prizes
- 14.00 Lunch
- 15.00 Free Tour of Oxford University Museum of Natural History Osteology Collection  
MALGOSIA NOWAK-KEMP  
(Numbers are limited to 20 people - bookings will be taken between 17.00 Friday and 17.00 Saturday at the conference on a first come, first serve basis.)

Only presenting authors are given here.

\* = Entrant for student prize

Further information about the conference can be found at:

<http://www.babao.org.uk/index/babao-conference-2008>